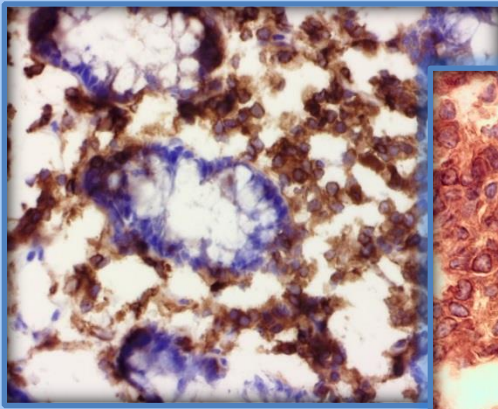


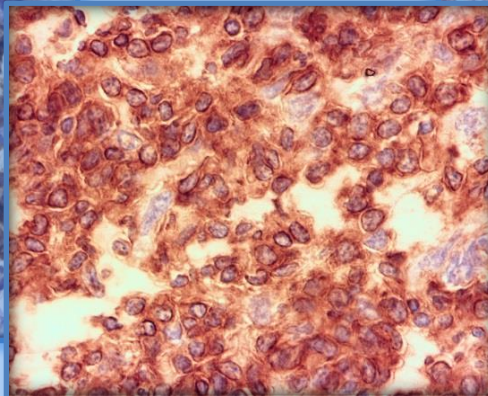


## ihcDirect® CD45 Ab Reagents

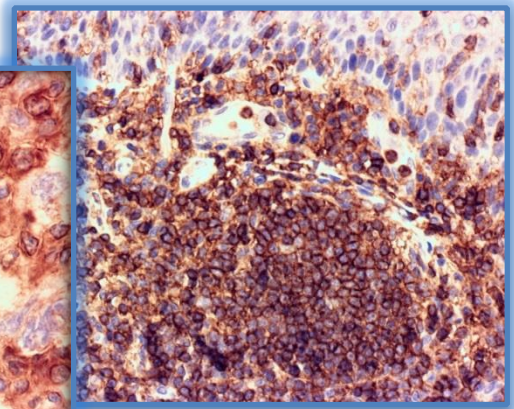
Anti-Human CD45 (Clone C95)



Colon Using Frozen Tissue



Hodgkin's Lymphoma Using Frozen Tissue



Tonsil Using FFPE Tissue

**Catalog Numbers:** K31010-XXX, for use with DAB Kit (ihc DAB Chrom) K50001-015, K50001-030 and ihc Blocker K51001-015 (Intl.) or K51002-015 (USA)

**Package Size:**  
**(XXX)**  
-005: For ~50 IHC Tests using frozen or FFPE tissues  
-010: For ~100 IHC Tests using frozen or FFPE tissues  
-015: For ~150 IHC Tests using frozen or FFPE tissues

**Antibody:** Mouse

**Storage:** Store at 4°C upon receiving. DO NOT FREEZE.

**Intended Use:** For *In Vitro* Diagnostic Use

Polymerized horseradish peroxidase (polyHRP)-labeled anti human CD45 (Clone C95) antibody is intended for laboratory use to qualitatively identify by light microscopy the presence of CD45 molecules which are expressed in hematopoietic cells or tumors in sections of formalin-fixed, paraffin-embedded (FFPE) and/or frozen tissues (FT) using immunohistochemistry (IHC) test method. The clinical interpretation of any staining or its absence should be complemented by morphological studies using proper controls and should be evaluated within the context of the patient's clinical history and other diagnostic tests and proper controls interpreted by a qualified pathologist and/or physician. This conjugate has been pre-diluted and optimized for IHC use without further dilution.

### Summary and Explanation:

The ihcDirect CD45 is a polyHRP conjugated mouse monoclonal antibody intended for laboratory use as a qualitative immunohistochemistry reagent for the identification of a broad range of leucocytes. CD45 is also named Leucocyte Common Antigen (LCA). It expresses in all leucocytes including both B and T lymphocytes as well as other hematopoietic cells, such as basophils, granulocytes, macrophages / histiocytes, mast cells, and monocytes. This test may be used on frozen human tissues (FT) and formalin-fixed-paraffin-embedded (FFPE) human tissues and applied to individuals suspected of having related forms of lymphomas, other hematopoietic tumors, etc.

