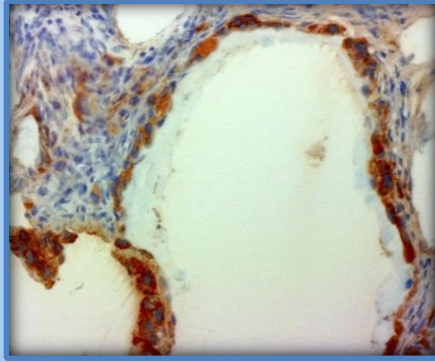
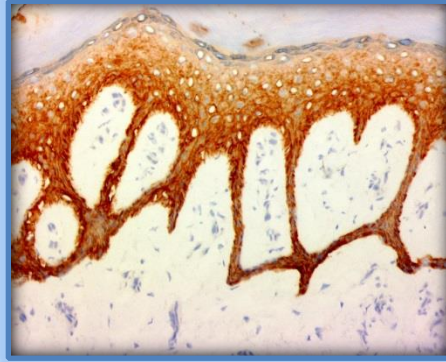




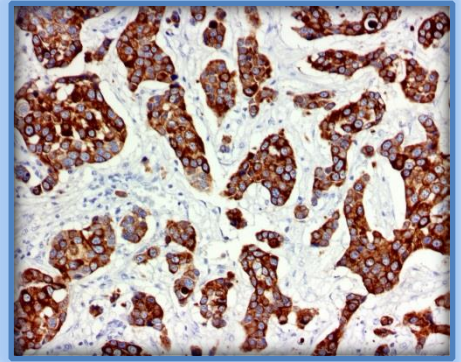
ihcDirect[®] Pan-CK 4Abs Kits and Ab Reagent Anti-Human Pan-Cytokeratin (Clones AE1/AE3, C94, R226)



Colon Cancer Using Frozen Tissue



Skin Cancer Using Frozen Tissue



Breast Cancer Using FFPE Tissue

Catalog Numbers: K41058-XXX and K31058-XXX for use with DAB Kit (ihc DAB Chrom) K50001-015, K50001-030 and ihc Blocker K51001-015 (Intl.) or K51002-015 (USA)

Package Size:
(XXX)
-005: For ~50 IHC Tests using frozen or FFPE tissues
-010: For ~100 IHC Tests using frozen or FFPE tissues
-015: For ~150 IHC Tests using frozen or FFPE tissues

Antibody: Mouse and Rabbit

Storage: Store at 4°C upon receiving. DO NOT FREEZE.

Intended Use: For In Vitro Diagnostic Use

Polymerized horseradish peroxidase (polyHRP)-labeled anti human pan-cytokeratin (Clones AE1, AE3, C94 and R226) antibody cocktail is intended for laboratory use to qualitatively identify by light microscopy the presence of cytokeratins which are expressed in tissues of epithelial origin, including squamous and glandular epithelial cells, in sections of formalin-fixed, paraffin-embedded (FFPE) and/or frozen tissues (FT) using immunohistochemistry (IHC) test method. The clinical interpretation of any staining or its absence should be complemented by morphological studies using proper controls and should be evaluated within the context of the patient's clinical history and other diagnostic tests and proper controls interpreted by a qualified pathologist and/or physician. This conjugate has been pre-diluted and optimized for IHC use without further dilution.

Summary and Explanation:

The ihcDirect Pan-CK 4Abs is a polyHRP conjugated antibody cocktail which consists of equal amounts of three mouse monoclonal antibodies clones AE1, AE3 and C94 and one rabbit monoclonal antibody clone R226. Clones AE1 and AE3, always used together as an anti-pan-cytokeratin antibody cocktail, recognize cytokeratins 1-8, 10, 14 -16 and 19 in Western-Blot assay; clone C94 recognizes cytokeratins 8 and 18; clone R226 specifically recognizes CK5. The classic Pan-CK antibody cocktail AE1/AE3 has been the most popular Pan-CK cocktail in the market and is known to have limited reactivity in hepatocellular carcinomas (HCCs), renal cell carcinomas (RCCs), and pulmonary small cell carcinomas, and even on FFPE tissue specimens. Based on Novodix test results on frozen tissues, this cocktail has limited reactivity in some lung cancer specimens and no to very poor reactivity with the cytokeratin proteins in epidermal layer of skin. This four-antibody cocktail is intended for laboratory use as a qualitative immunohistochemistry reagent for the identification of a broad range of cytokeratin proteins and for overcoming the poor reactivity of AE1/AE3 in frozen epithelial tissues, such as skin and lung.

