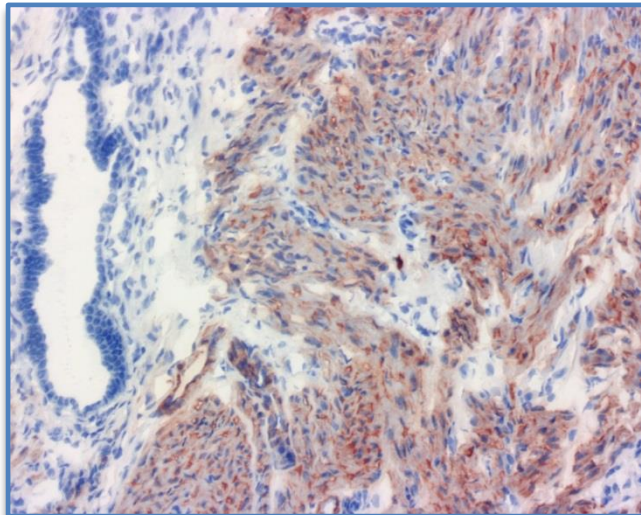
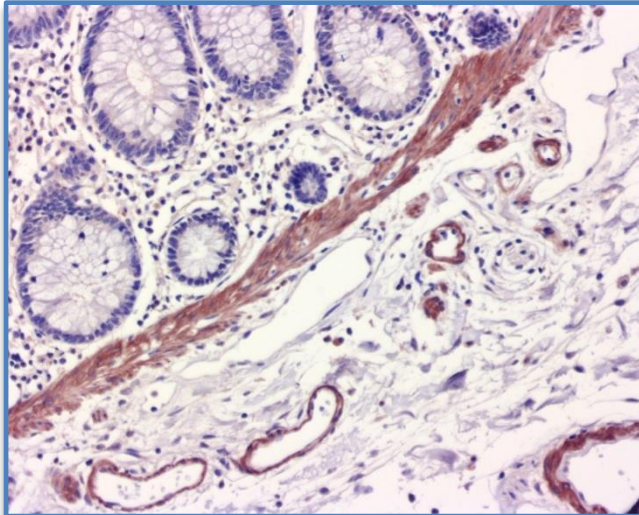


ihcDirect[®] SMMS-1 Kit
Anti-Human Smooth Muscle Myosin Heavy Chain (Clone: SMMS-1)



Uterus Using Frozen Tissue



Colon Using FFPE Tissue

- Catalog Number:** K41024-XXX:
- Package Size:** -005: For ~50 IHC Tests using frozen or FFPE tissues
(XXX) -010: For ~100 IHC Tests using frozen or FFPE tissues
- Antibody:** Rabbit
- Storage:** Store at 4°C upon receiving. **DO NOT FREEZE.**
- Intended Use:** For In Vitro Diagnostic Use

Polymerized horseradish peroxidase (pHRP)-labeled anti-human smooth muscle myosin heavy chain antibody (SMMS-1 pHRP) is intended for laboratory use to qualitatively identify by light microscopy the presence of smooth muscle myosin heavy chain in sections of formalin-fixed, paraffin-embedded tissue sections or frozen tissues using immunohistochemistry (IHC) test methods. The clinical interpretation of any staining or its absence should be complemented by morphological studies using proper controls and should be evaluated within the context of the patient's clinical history and other diagnostic tests by a qualified pathologist/physician. This conjugate has been pre-diluted and optimized for IHC use without further dilution.

Summary and Explanation:

Smooth muscle myosin heavy chain is a major component of the contractile apparatus of the smooth muscle cells, and also is a myoepithelium-associated protein. SMMS-1 antibody reacts with human visceral and vascular smooth muscle cells. The antibody also recognizes human myoepithelial cells. IHC staining with SMMS-1 antibody is very helpful in distinguishing benign sclerosing breast lesions and carcinoma in situ from infiltrating breast carcinoma. (Kalof et al., 2004; Hill CB, Yeh IT, 2005). The key component in this kit is horseradish peroxidase (HRP) polymer (PolyHRP) labeled anti human smooth muscle myosin heavy chain antibody (clone SMMS-1). The ihc Blocker provided in the kit used prior to applying SMMS-1 pHRP antibody conjugate will reduce background and nonspecific staining. Chromogen 3,3'diaminobenzidine (DAB) is used in this kit.

