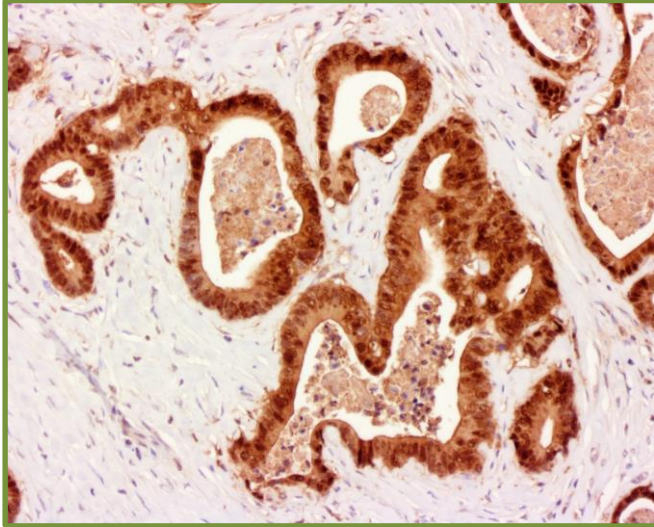
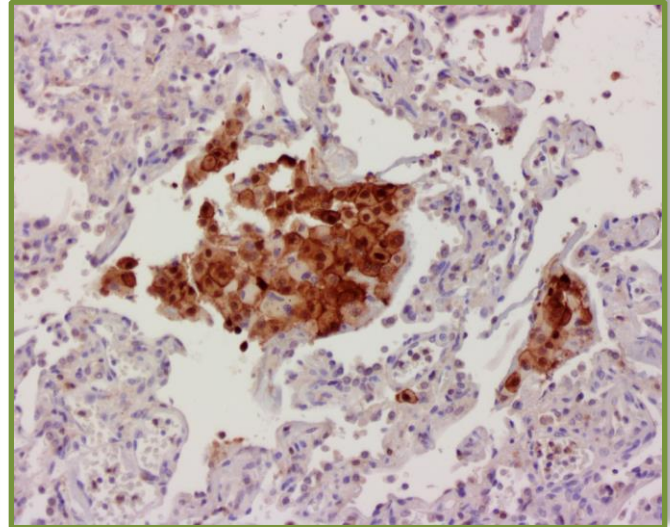


ihcPrime™ Galectin-3 Reagent  
Clone R105



Colon Cancer Using FFPE Tissue



Lung Using FFPE Tissue?

Catalog Numbers:     RK32025-XXX, goes with ihc DAB K50001-### and  
                                  ihc Blocker K51001-### (Intl.) or K51002-### (USA)

Package Size:         -005: For ~50 IHC Tests using frozen or FFPE tissues  
                                  (XXX)         -010: For ~100 IHC Tests using frozen or FFPE tissues

Antibody:             Rabbit

Storage:             Store at 4°C upon receiving. DO NOT FREEZE.

Intended Use:         For Research Use Only

The ihcPrime and ihcDirect® are conjugated primary antibodies, including therapeutic (abs) directly onto polymerized HRP enzymes that can deliver test results in as short as 10-minutes. This direct labeling approach improves performance by eliminating secondary antibodies, greatly simplifying test procedures while driving exceptionally fast immunohistochemistry (IHC) test results for both frozen and FFPE tissues. No special equipment is required!

ihcPrime Galectin-3 (Gal-3) is approximately a 30kDa monoclonal rabbit anti-human antibody against LGALS3. Gal-3 is a cytoplasmic protein and member of the beta-galactosidase-binding lectin family. Gal-3 is normally distributed in the epithelia of many organs, in some inflammatory cells, including macrophages, as well as Kupfer and dendritic cells. Gal-3 may be up-regulated during inflammation, cell proliferation and cell differentiation processes and by tumor genesis processes including some types of lymphomas and thyroid neoplasms. Gal-3 may have been shown to be down-regulated in other cancers such as: colon, breast, ovarian and uterine carcinoma.